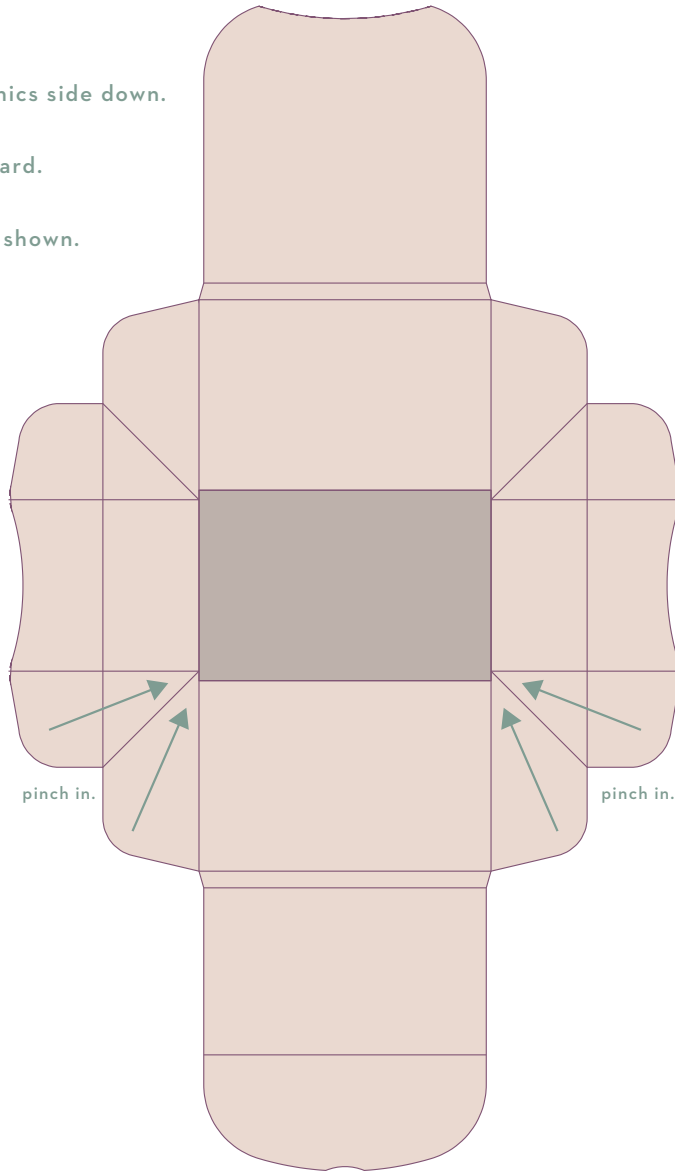
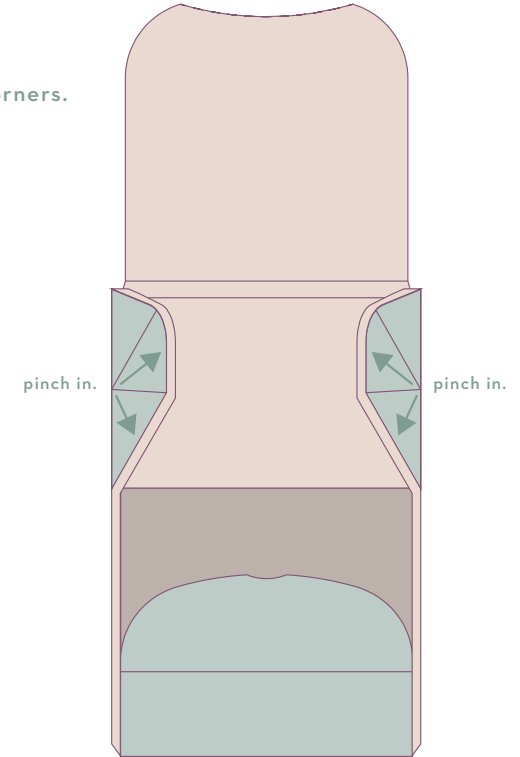


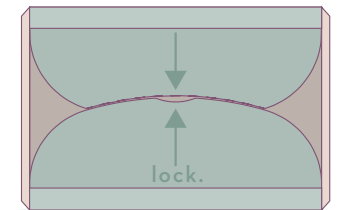
1. lay cardboard graphics side down.
2. fold all creases inward.
3. pinch corners in as shown.



4. fold long flap over pinched corners.
5. push lip into center inside.
6. pinch in other two corners.



7. fold long flap over pinched corners.
8. fit lips together in inside center of box to brace.



9. add soil and start your plant!



graphics side down.

center inside.

graphics side up.